

Enhanced Wound Documentation

A suite of products to meet the varied requirements across the continuum of care.

Bruce Davey PhD, Matthew Campbell, Christopher Fairbairn & Peter Metcalfe

Background

Chronic wounds can take months or even years to heal. Over each patient's healing time there are many nurses and doctors involved in their care, which takes place in a variety of settings, such as hospitals, clinics, nursing homes, and even in their own homes.

Electronic wound measuring devices and apps are proving to be useful at standardizing wound evaluation and improving communication among medical professionals and their patients, as well as improving patient care^{1,2}. The key reasons for the development of these devices have been the clinical and legal concerns around poor quality documentation, inconsistent manual measurements and infection control, as well as to improve evidence based treatment strategies and drive continuous improvement in wound-care^{3,4}. However, very few of these devices have been designed to meet the needs of users operating across the continuum of care as well as in clinical research.

A Comprehensive Wound Documentation System

There is currently only one comprehensive wound documentation system available that offers a range of point of care devices as well as a centralised database that ensures the security of all the information collected about each patient or subject.

The system enables a care provider to use any configuration of these devices across their care settings, and to choose the devices that best meet their needs for imaging, documenting and portability. The point of care devices are:

- **SilhouetteStar**: a sophisticated 3D camera that accurately captures images and wound dimensions, including depth and volume at the click of a button.
- **SilhouetteLite+**: a sensor and an app for mobile Apple devices that enable users to add patients, capture consistent images, record detailed notes and non-contact 2D measurements.
- **SilhouetteLite**: a simplified app for mobile Apple devices that enables users to add patients, capture consistent images, and record simple notes without measurements.

All of these devices interface with SilhouetteCentral—the online data repository for the patients' wound records—which enables:

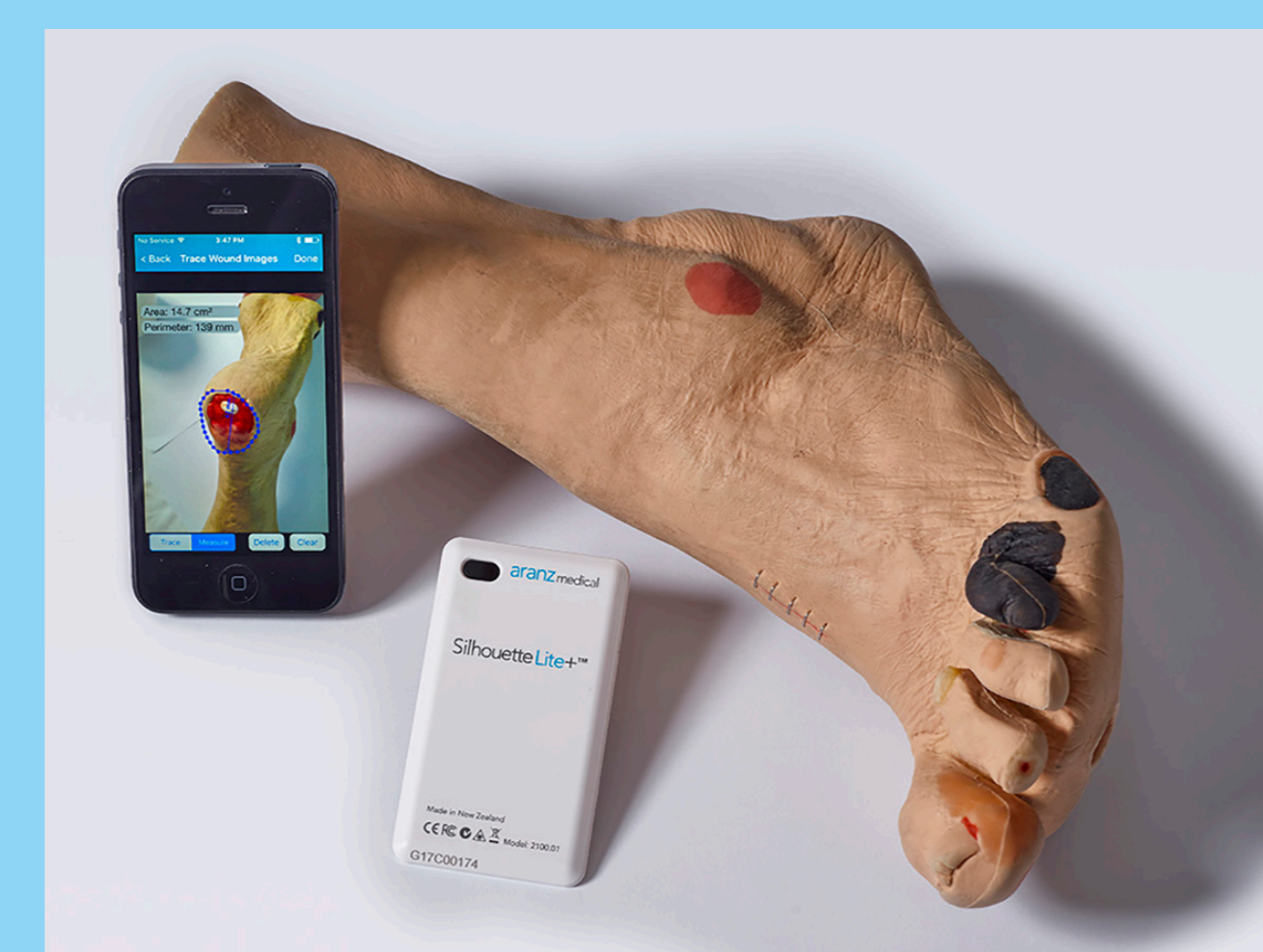
- images and notes to be securely synchronized with the patient's medical record via the internet,
- a single location for a multidisciplinary team to access the patients' data,
- a common interface to existing Electronic Medical Record systems.

Key Features of the Point of Care Devices



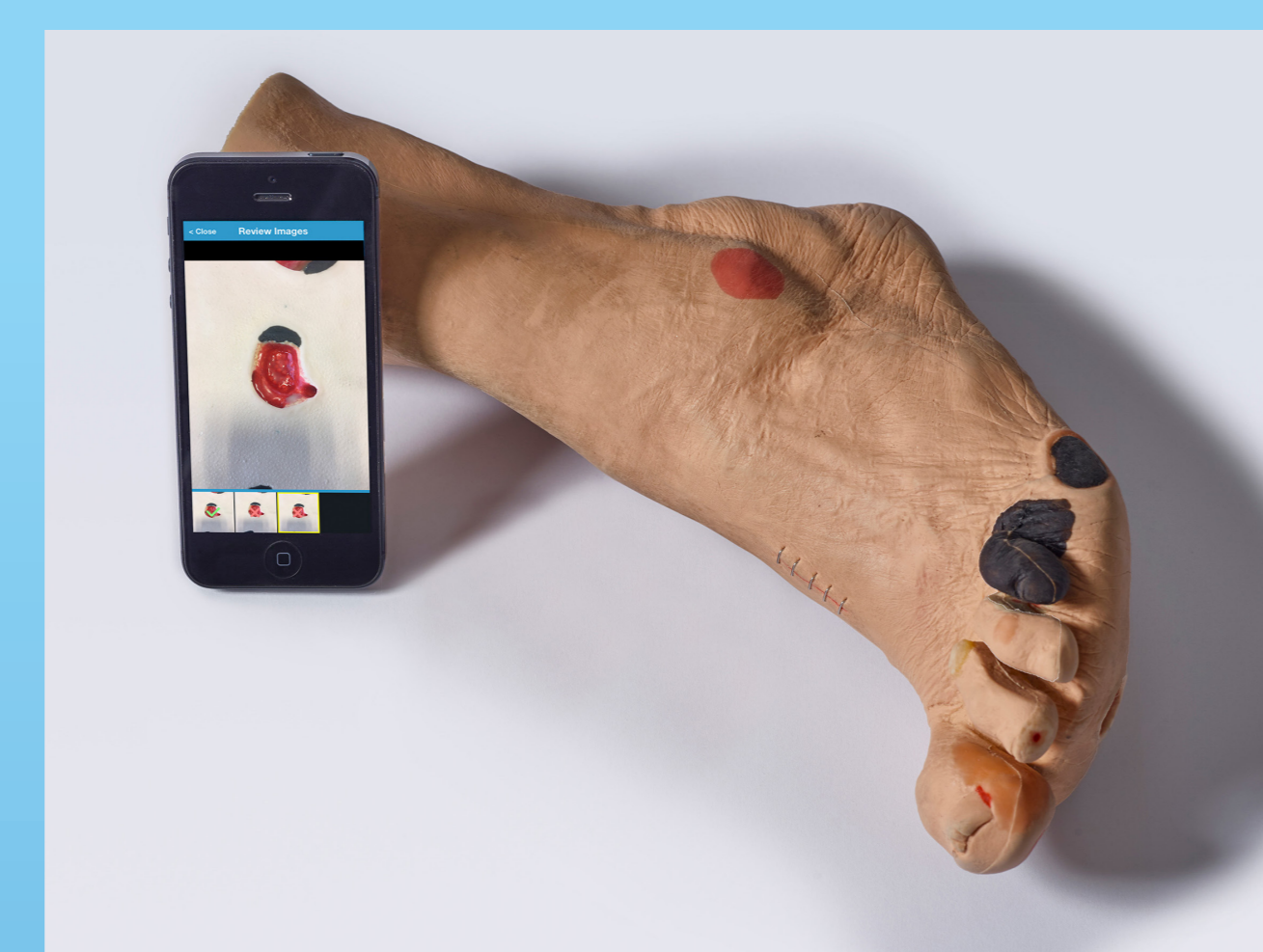
SilhouetteStar delivers:

- Consistently high quality images
- 3-D wound measurements
- Extensive notes fields
- Very accurate tracking of healing
- Measurements on complex body shapes
- Ease of use
- Secure data



SilhouetteLite+ delivers:

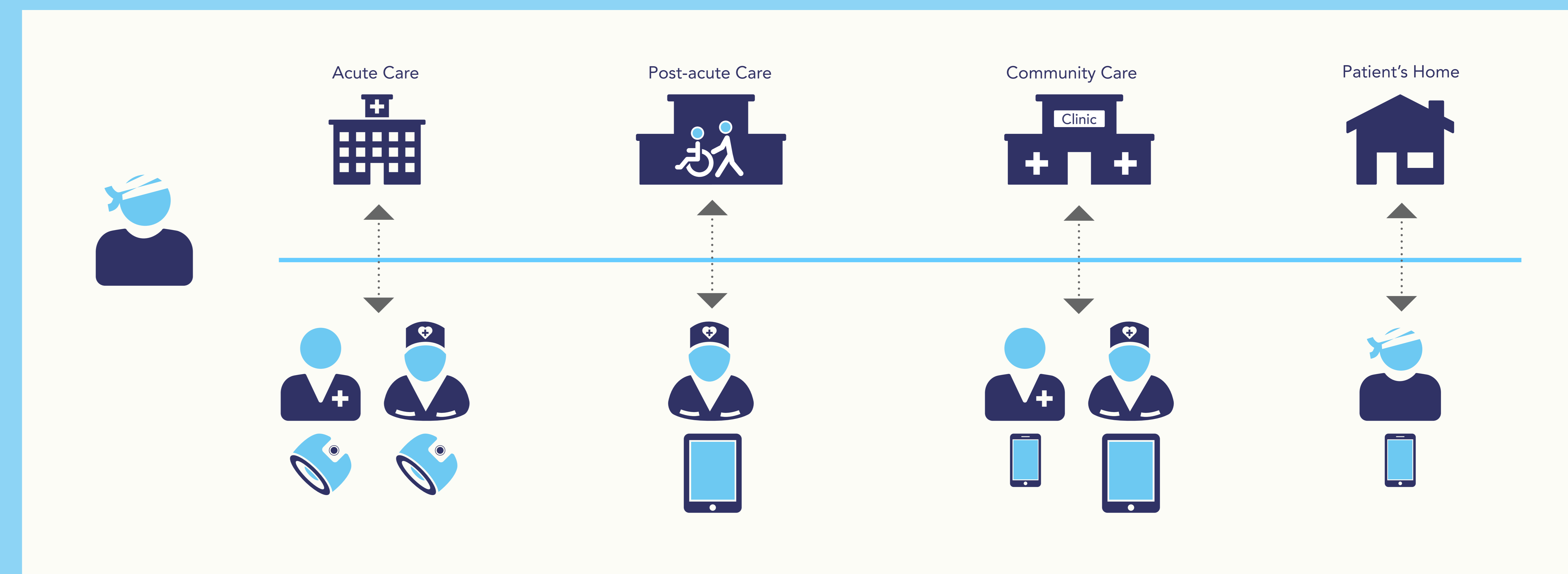
- Consistently good images
- 2-D wound measurements
- Notes fields
- Accurate tracking of healing
- Portability
- Ease of use
- Secure data



SilhouetteLite delivers:

- Consistently good images
- Simple notes fields
- Portability
- Ease of use
- Secure data

A Variety of Wound Documentation Devices Used Across the Continuum of Care



Silhouette in Clinical Trials

- Silhouette has been used in more than 100 clinical trials since 2007.
- The clinical trials range in size from small single-centre studies to large multi-centre studies with hundreds of sites across multiple continents—up to 250 investigator sites.
- Clinical research requirements for data accuracy and security are easily accomplished with SilhouetteStar, SilhouetteLite+ and SilhouetteCentral.
- Silhouette has been used in clinical trials for:
 - Skin conditions such as acne, burns, and Epidermolysis Bullosa (EB),
 - Acute Bacterial Skin and Skin Structure Infections (ABSSSI),
 - Agents that include biological, pharmaceutical, dressing and medical device products,
 - Ulcers including those caused by Critical Limb Ischemia (CLI), Venous Leg Ulcers (VLU), Diabetic Foot Ulcers (DFU), Pressure Injuries/Ulcers (PU) and Buruli Ulcers.

Silhouette in Clinical Practice

- Silhouette is used in clinical practices around the world in acute care, out-patient and community nursing settings, as well as in patients' homes.
- The practices range in size from single site, stand-alone Silhouette installations to large multi-site practices with numerous sites across a territory utilizing the suite of Silhouette point-of-care devices.
- Clinical practice requirements for data security and timeliness of wound assessments are easily accomplished with the Silhouette suite of devices used at the point of care, and SilhouetteCentral for clinical assessments and wound monitoring over time.

References

1. *Wound Measurement Techniques: Comparing the Use of Ruler Method, 2D Imaging and 3D Scanner*, A. Shah, C. Wollak, J. Shah. *Journal American College Clinical Wound Spec.* 2013 Dec; 5(3): 52-57.
2. *Standardization of Wound Photography Using the Wound Electronic Medical Record*. Rennert, R., Golinko, M., Kaplan, D., Flattau, A., Brem, H. *Advances in Skin & Wound Care.* January 2009, Vol 22(1): 32-38.
3. *The importance of continuous wound measuring*, Gethin G. *Wounds UK.* 2006, 2(2):60-68.
4. *Diagnostic and Prognostic Utility of Non-Invasive Multimodal Imaging in Chronic Wound Monitoring: a Systematic Review*, R. Mukherjee. et al., *J Med Syst.* 2017, 41 (3)