

HOW TO GUIDE

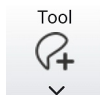
Silhouette Tracing Tool - SilhouetteStar

OVERVIEW

Tap mode on banner.



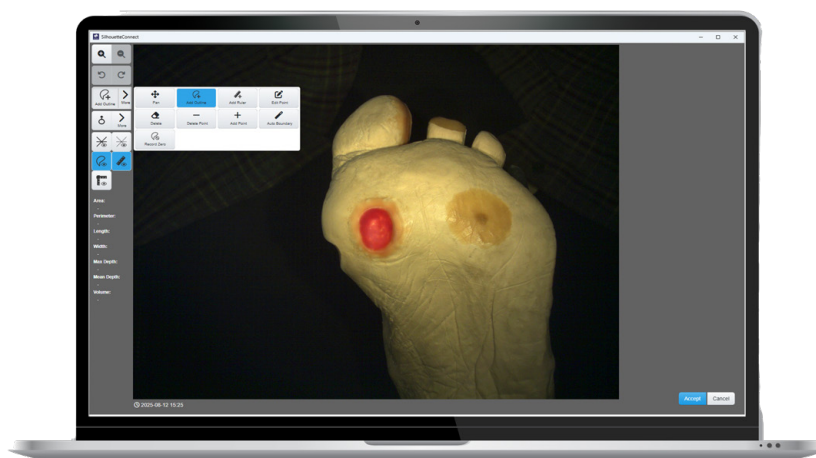
As you tap to change the function the icon on the banner will show the mode.



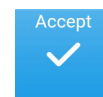
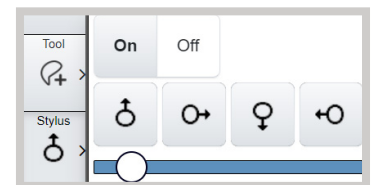
Tool controls include: tracing outlines, drawing rulers, editing, and marking a wound as healed.



On-Screen Stylus is used on touch screens to trace around the wound.



On-Screen Stylus Dropdown Menu



Accept once task is completed.



Cancel will remove the tracing and take you back to the image

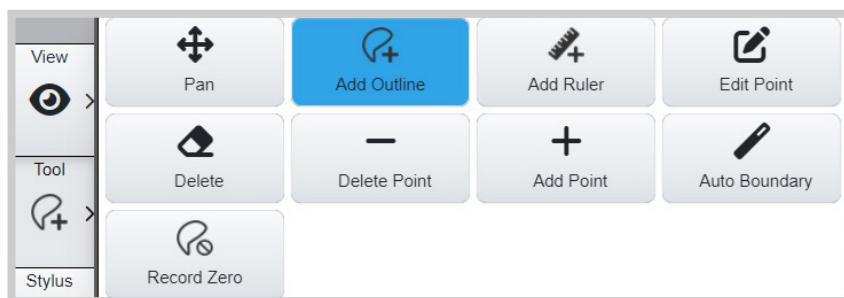


Undo the last task.



Redo the last task.

Tool Dropdown Menu

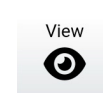


Resize the image by selecting the **Pan** tool and using pinch gestures with your fingers on the screen.

OR



Use the magnifying glass on the View dropdown menu to zoom in or out on the image.



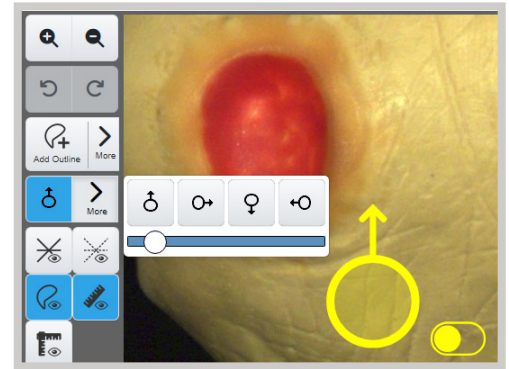
View the image with and without the boundary to allow the user clear site of wound margin. Rulers can be visible or hidden.

Select the **Pan** tool to move the image around when it is zoomed.

ON-SCREEN STYLUS



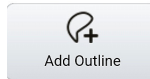
The stylus can be turned on or off on the tool bar. The on-screen stylus is not required on a laptop with a mouse or touchpad and can be turned off.



TOOL - ADD OUTLINE

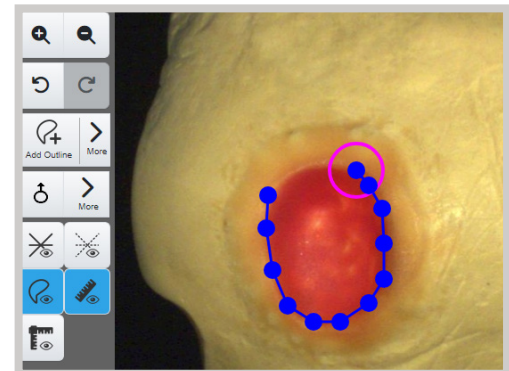


From Tool menu, select **Add Outline**.



Continuous tracing: Hold and drag cursor to trace around the wound. Return to the finish target to complete the outline.

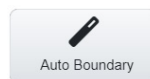
Dot point connecting: Tap to create a point. Continue dropping points around the wound to complete the outline.



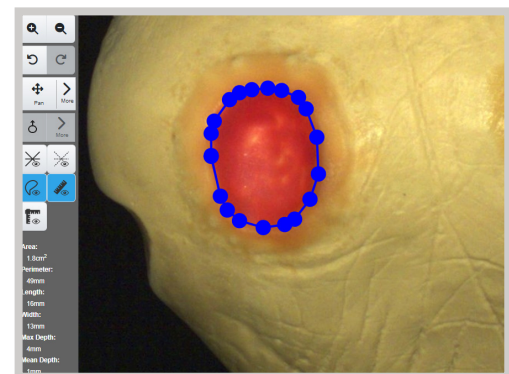
TOOL - AUTO BOUNDARY



From Tool menu, select **Auto Boundary**.



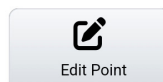
The outline of the wound will be automatically detected and display. Check and edit if necessary.



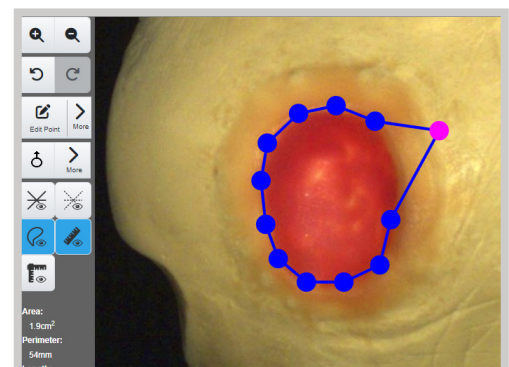
TOOL - EDIT POINT



From Tool menu, select **Edit Point**.



Select point, it turns pink. Drag point to correct location and tap again to place it. Continue to edit other points if necessary.

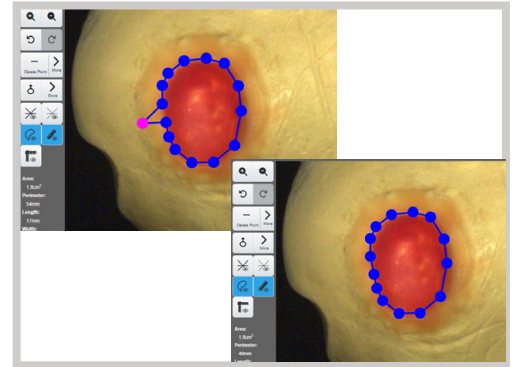
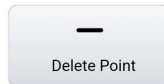


TOOL - DELETE POINT



From Tool menu, select **Delete Point**.

Select point, it turns pink. Tap on-screen stylus again to delete it.



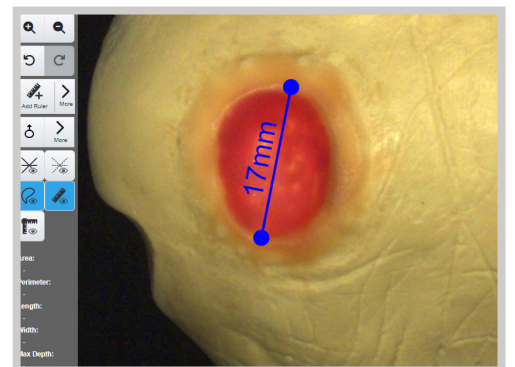
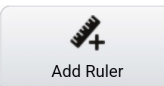
TOOL - ADD RULER



From Tool menu, select **Add Ruler**.

Move cursor to where you wish to add the start point from and tap.

Move the cursor to point you wish to measure to and tap. A ruler will appear with the distance measurement.



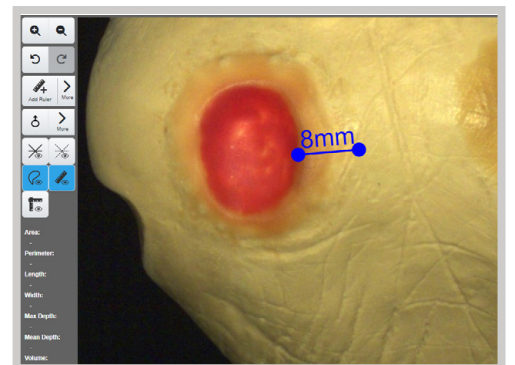
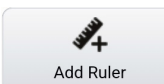
TOOL - RULER TO DOCUMENT TUNNELING



To record undermining, measure with a calibrated probe and draw a series of dots on the skin following the undermining.

When tracing the wound in Silhouette, add a ruler, or a series of rulers using the drawing tool.

The wound can be traced in the normal way using Silhouette.



TOOL - RECORD ZERO



This is for when you wish to record the wound site as a healed wound.

